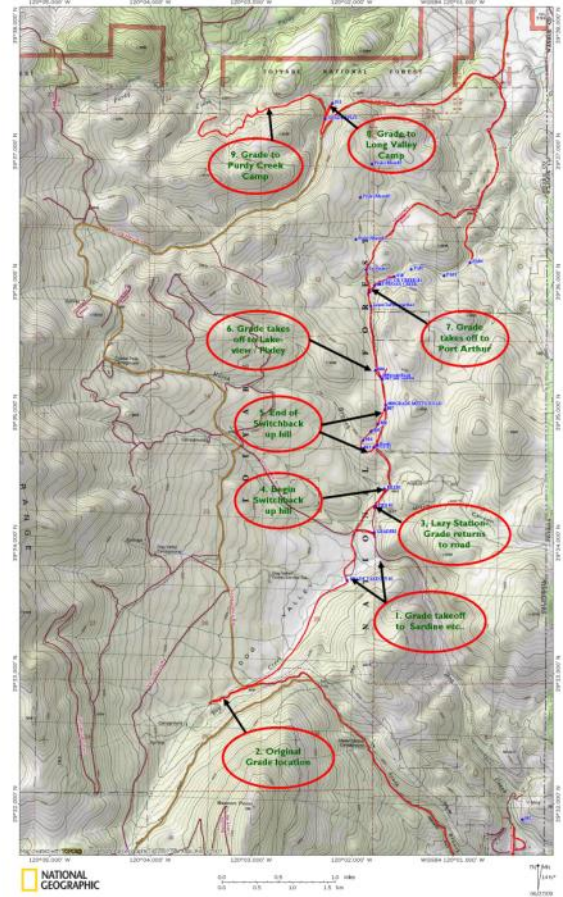
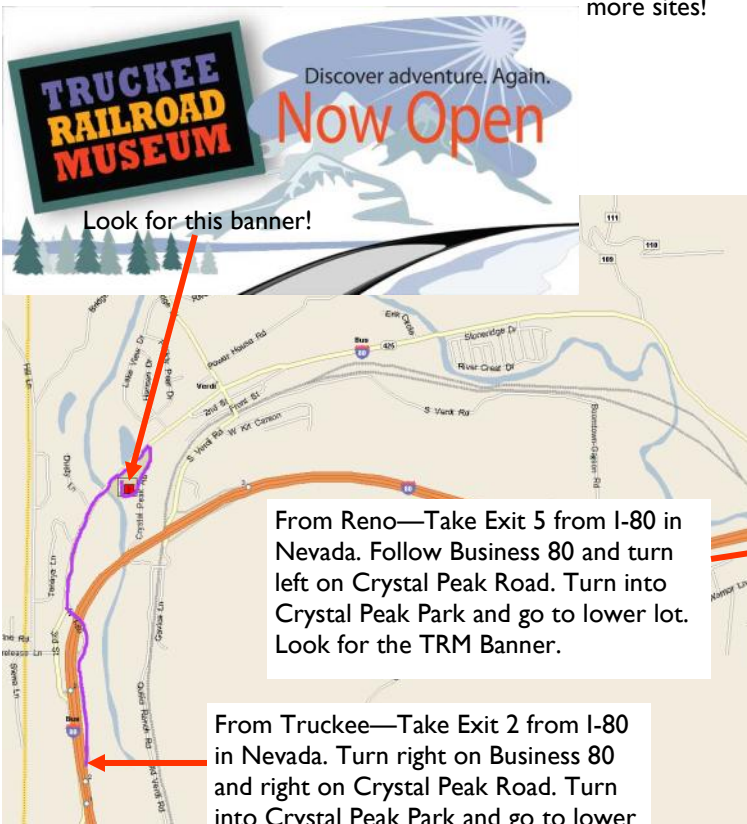


# TRUCKEE RAILROAD MUSEUM

## Trestle Tour Verdi Lumber

**July 10th** — If you are an explorer at heart, this is the tour for you. More appropriately called a Trestle Hunt, this newest edition to the Trestle Tour family is still under development. We will explore the northern (oldest) section of the Verdi Lumber holdings. Some grade and 2 logging camps have been located. We will take you to the 2 camps, but also identify where the grade for at least 4 more take off. If you are an experienced backwoods adventurer with the maps and equipment, you can come back and help us find more sites!



- Date:** July 10th, 2010  
**Time:** 10:00 am  
**Location to meet:** Parking lot of Crystal Peak Park, Verdi, NV  
**Duration of the Tour:** About 4 hours  
**Vehicle / Road conditions:** Mostly dirt roads. 4WD / SUV with some clearance advised. No Jeep trails.  
**Food:** Bring lunch and plenty to drink. None available along the way!  
**Dress:** Changeable weather! Bring layers of clothing. Insect repellent and sunscreen might be handy. Underbrush in some areas. Long pants suggested.  
**Hiking:** One easy 1/2 mile hike. One difficult 3/4 mile hike. Both optional.  
**Cost:** No cost! Donations are gladly accepted and 100% goes to the Truckee Donner Railroad Society (501c 3 non-profit).

[www.truckeedonnerrailroadsociety.com](http://www.truckeedonnerrailroadsociety.com)

Discover Adventure